

Direct drive centrifugal pumps DC BL



The magnetic drive centrifugal pumps PD and PDH series, made by the Japanese company Sanso, are plastic moulded pumps powered by canned brushless DC motors.

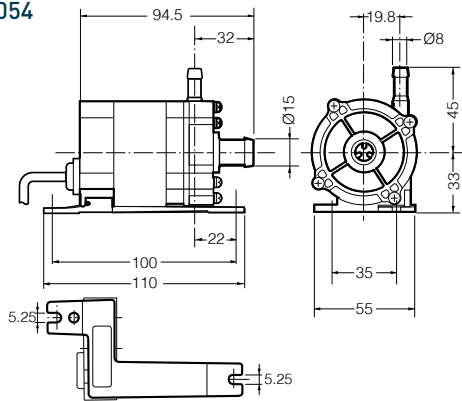
Designed to be cool, quiet, compact and lightweight, due to the DC BL motors the pumps are:

- Better in efficiency
- Better in performances due to the higher speed rotation
- Longer in life and less in maintenance
- Very simple and inexpensive in installation
- Speed controllable through an external voltage signal

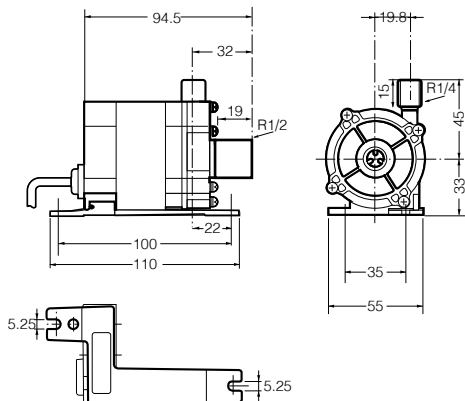
Typical applications:

- Laser cooling
- Chillers and coolers
- Fluid circulation
- Fuel cells
- Marine
- Solar thermal heating
- Medical apparatuses
- Circulation and recirculation devices

PDH - E054

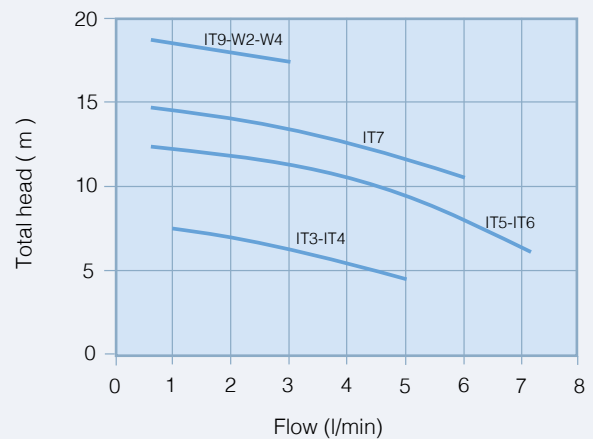


IT4 - IT6 - W2

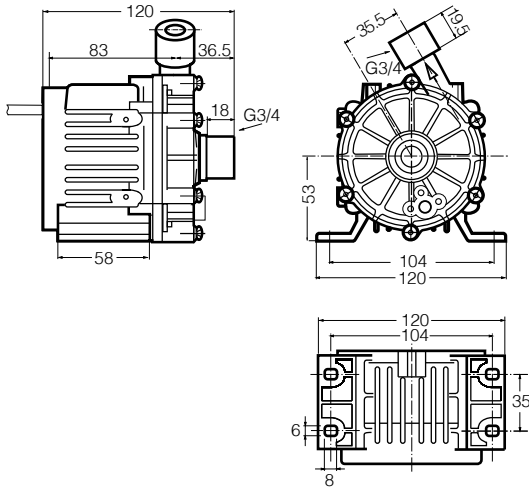


IT3-IT5-IT7-IT9-W4

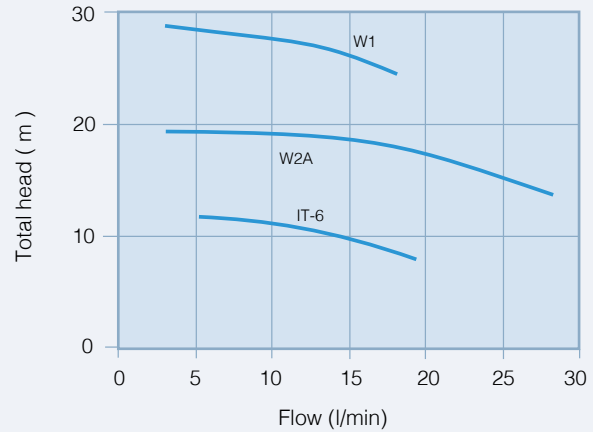
Dimensions mm.



PD - E 51



Dimensions mm.



MODEL	VOLTAGE (V DC)	INPUT POWER (W)	FITTINGS		TOTAL HEAD (mt)	FLOW (l/min)	PUMP MATERIALS				BL MOTOR DRIVER	MAX LIQUID TEMP (°C)
			SUCTION	DISCHARGE			CASING	BACK CASING	IMPELLER	BEARINGS		
PDH - E 054 IT3	12	24	TH 1/2"	TH 1/4"	8,5	6	PPE GF	PPS GF	PP GF	Carbon graphite	INT	60
PDH - E 054 IT4			HB 15 mm	HB 8 mm								
PDH - E 054 IT5	41	41	TH 1/2"	TH 1/4"	12	8						
PDH - E 054 IT6			HB 15 mm	HB 8 mm								
PDH - E 054 IT7	24	47	TH 1/2"	TH 1/4"	15	6						
PDH - E 054 IT9			HB 15 mm	HB 8 mm								
PDH - E 054 W2	55	55	HB 15 mm	HB 8 mm	19	3						
PDH - E 054 W4			TH 1/2"	TH 1/4"								
PD - E 51 IT6	24	86	TH 3/4"		13	15	PPS GF				INT	80
PD - E 51 W2A Speed control		160	29	25								
PD - E 51 W1 Speed control	48	240	TH 3/4"		29	25					SEP	

Pump casing	HB	Hose barbed
	TH	Threaded
BL motor driver	INT	Built in
	SEP	External
Materials	PPE GF	Noryl glass filled
	PPS GF	Ryton glass filled
	PP GF	Polypropylene glass filled